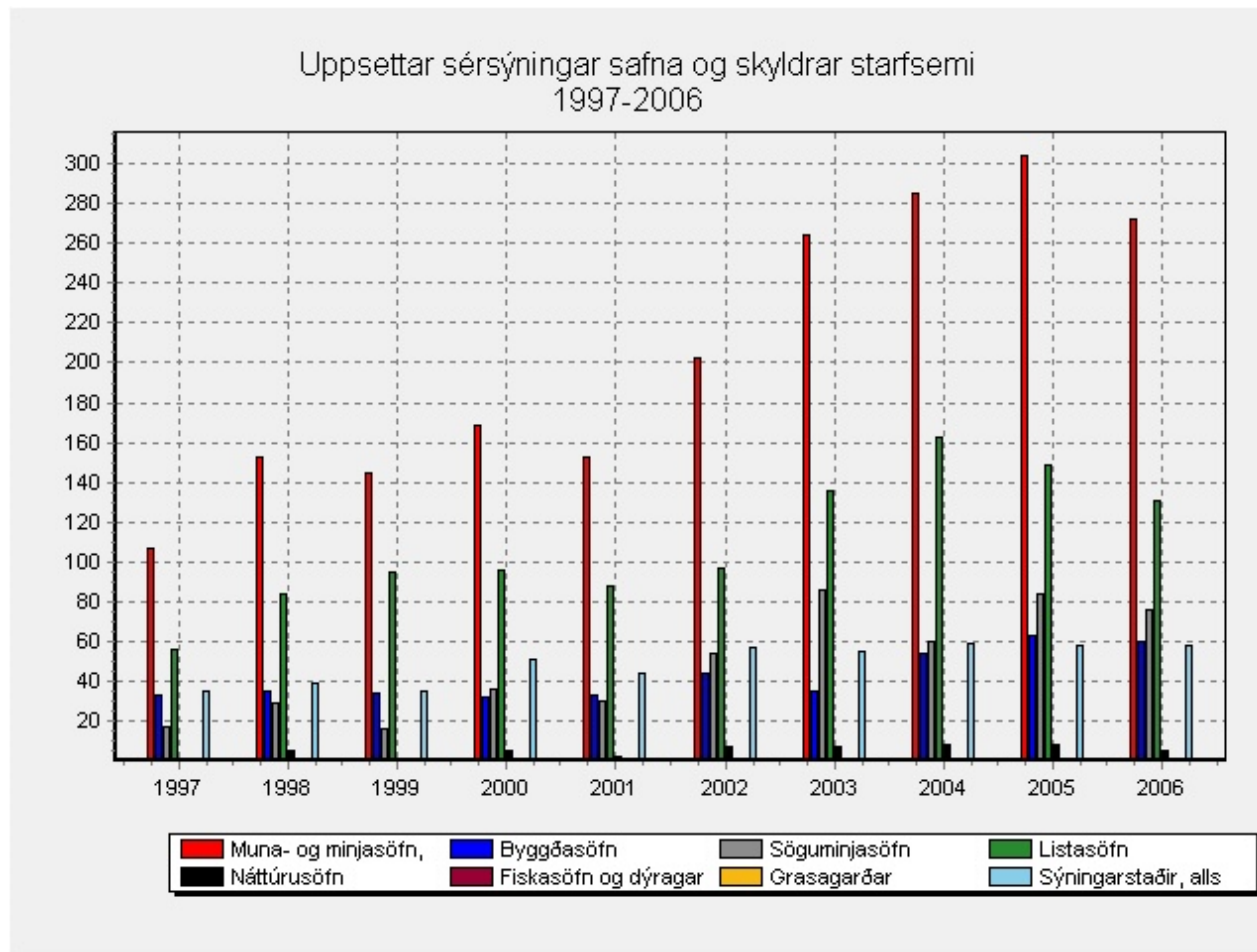


THE ART OF THE TURF: ARCHITECTURAL POLITICS AND HERITAGE

Sigurjón Baldur Hafsteinsson
University of Iceland

Museum exhibitions 1997-2006

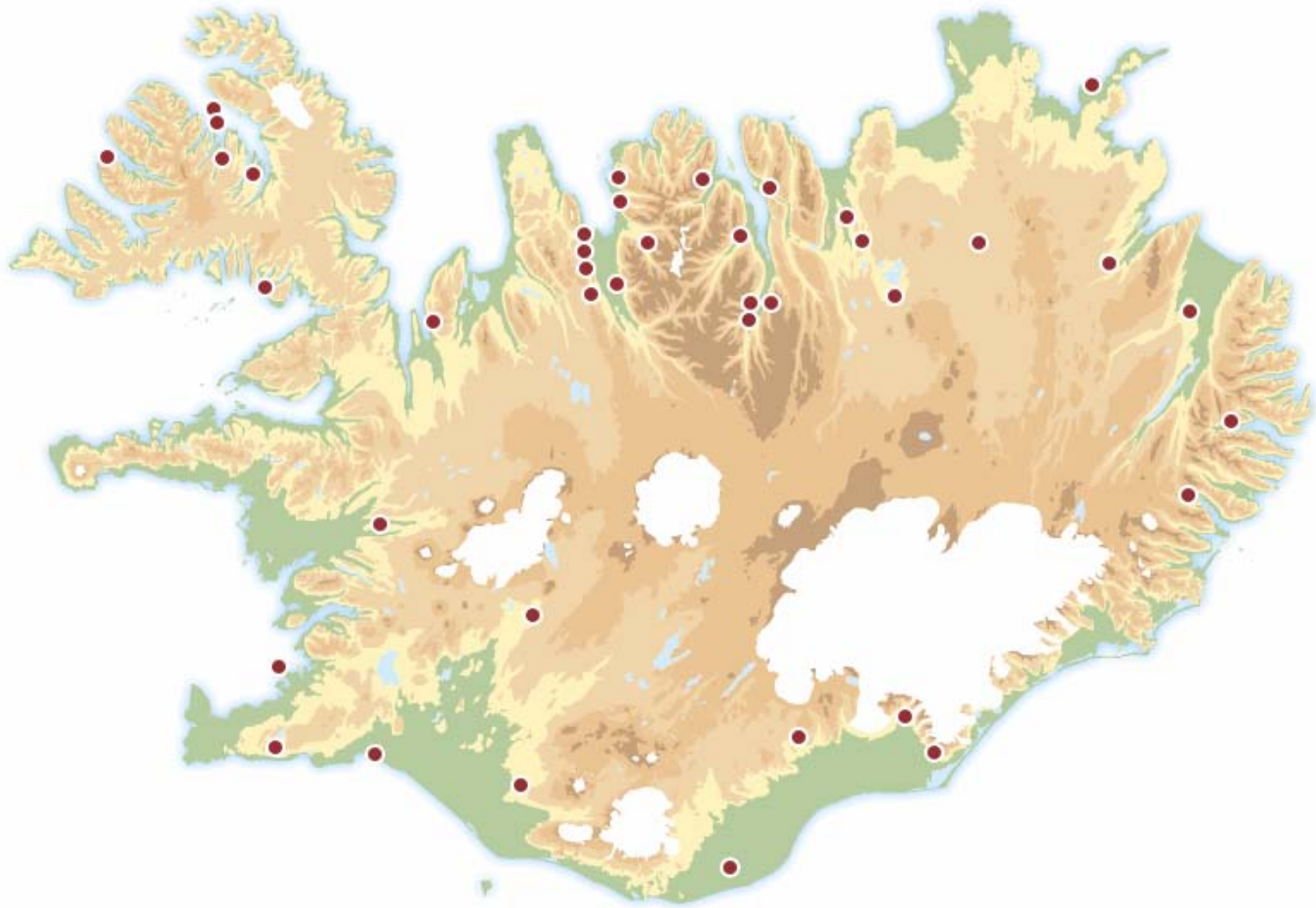


Margrét segir að stuðnings- og samstarfsaðilar Þjóðminjasafnsins, Minjar og saga, Hollvínir, Bakhjarl, sem er Landsvirkjun, og aðalsamstarfsaðilar vegna opunar, Bakkavör Group og VÍS, ásamt samstarfsaðilunum vegna sýninganna, sem eru Icelandair, Flugstöð Leifs Eiríkssonar og Síminn, hafi gegnt mikilvægu hlutverki í uppbyggingu safnsins og eigi ríkan þátt í því að ný grunnsýning marki þáttaskil í íslenski safnasögu og sýningagerð. "Þeirra framlag er ómetanlegt og er þeim þakkað fyrir árangursríkt samstarf með von um að gagnkvæmur ávinningur verði leiðarljós fyrir áframhaldandi farsælt samstarf."



Sponsors of the National Museum of Iceland in August 2004





14.500 visitors in 2009





Home of Eirik the Red and Leif the lucky



A heritage come to life



Heritage come to life A living museum



„UNESCO’s World Heritage List is considered a way to celebrate professional conducts in the act of preserving cultural and natural sites. [...] The UNESCO’s World Heritage List is as such considered to encourage carefully prepared tourism but the experience abroad has been that interest and respect of sites on the List has increased among tourists and locals. [...] Usually, tourism increases at sites that become part of the List and therefore *the sites become important for the well being of the nation*. [...] The turf-houses in the Historic Buildings Collection of [the National Museum] will become *the ballast* (kjölfesta) in the nomination to the List but a number of other turf-houses will also be nominated, which is important, as there are so few turf-houses left.“





ÍSLENSKI BÆRINN

MÝKT - HLÝJA - AÐLÖGUN
SUBTLETY - WARMTH - ASSIMILATION



The building of the ICELANDIC SEA MONSTER MUSEUM in 2009



